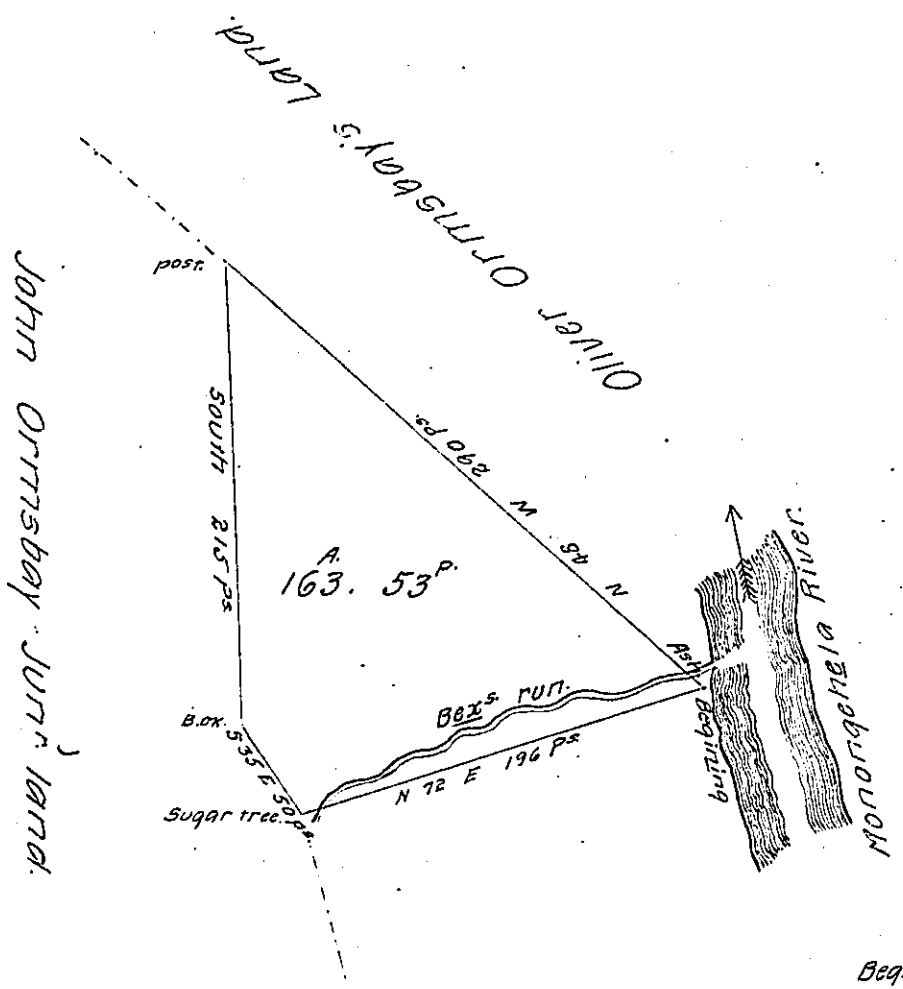


(See Page 61  
and 2-38-185)

XV  
50  
H4-3424  
2073  
1-138



Beginning at an Ash on the  
river bank Thence  
N 42 W 290 P.S. post.  
South 215 P.S. B. Oak.  
S 35 E 50 P.S. Sugar tree.  
N 72 E 196 P.S. Ash-1116  
place of beginning.

November 8th 1809.

Surveyed in persuance of a warrant granted to Charles  
Smith dated Sept 14th 1784 for 150 acres of land Situate  
in Allegheny County Sartclair township (formerly Washing-  
ton) on the waters of Bex's run containing one hundred  
<sup>sixty three</sup>  
~~& fifty two~~ acres & fifty three ~~one hundred & two~~ perches  
& allowance of six P<sup>er</sup> Cent for roads &c.

Called Sugar tree hill

David Coon D. Sr

Gen<sup>l</sup> Andrew Porter  
S. G. of the Commonwealth  
of Pen<sup>a</sup>

See another return from which this <sup>is</sup> corrected

Andrew Porter S. G.

IN TESTIMONY that the above is a copy of the original remaining on file in  
the Department of Internal Affairs of Pennsylvania, made  
conformably to an Act of Assembly approved the 16th day of  
February, 1833, I have hereunto set my Hand and caused  
the Seal of said Department to be affixed at Harrisburg,  
this twenty eighth day of February 1907.

*Isaac R. Brown*  
Secretary of Internal Affairs.